





Shield Force® Plus VS GLUMA® Desensitizer*

	 SHIELD FORCE PLUS	Heraeus Kulzer* GLUMA	WINNER
Composition	Resin-based	Glutaraldehyde	
	Phosphoric acid monomer	2-hydroxyethyl methacrylate	
	Bis-GMA	Glutaral	
	3G (TEGDMA)		
	HEMA		
	Alcohol		
	Water		
	Camphorquinone		
FEATURES & BENEFITS			
Expected Long-Term Pain Relief	3 Years****	9 Months	
Solution Color	Green	Clear	
Shelf Life	2 Years	2 Years	
Refrigeration Needed	Yes	No	
INDICATIONS			
Under Crowns	Yes	Yes	
Bridges	Yes	Yes	
Inlays and Onlays	Yes	Yes	
Veneers	Yes	Yes	
Provisionals	Yes	Yes	
Under Direct Restorations	Yes	Yes	
Cervical Erosions	Yes	Yes	
Exposed Dentin Surface	Yes	Yes	
Gingival Recession	Yes	Yes	
APPLICATION PROCESS	30 Seconds	≈ 65 Seconds	
Isolate with Dental Dam	Optional	Yes	
Apply	10 seconds	40 seconds	
Dry	10 seconds	≈ 10 seconds	
Rinse	-	≈ 10 seconds	
Cure	10 seconds		

*Not a registered trademark of Tokuyama Dental Corporation.

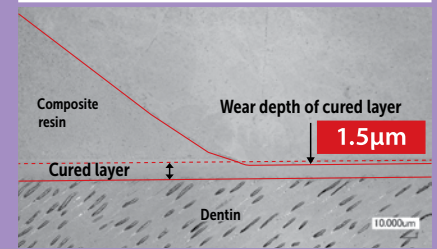
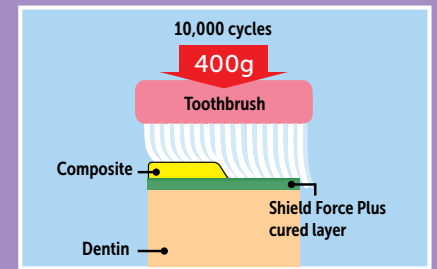
** In-house data, R&D, Tokuyama Dental Corporation.

***Based on Henry Schein pricing.

****Results may vary based on patient diet, proper oral care, and conformance to product directions. Wear data tested in vitro.



Toothbrush Abrasion Test



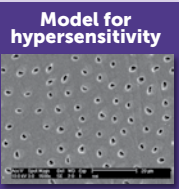
Shield Force Plus

Superior long-term results

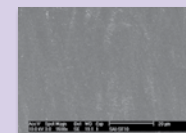
Shield Force Plus provides longer-lasting desensitization.

Sealing of dentinal tubules and durability:

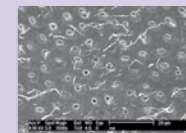
- A layer of Shield Force Plus remains on the dentin surface.
- Other products have worn out and exposed dentinal tubules.



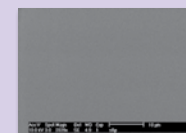
Initial placement



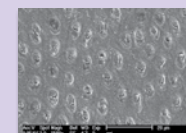
Shield Force® Plus



SuperSeal®

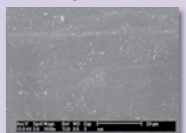


Seal&Protect®

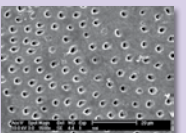


Gluma® Desensitizer

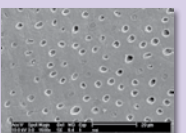
10,000 thermal cycles



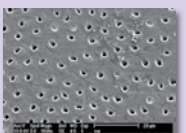
Shield Force® Plus



SuperSeal®











Seal&Protect®



Gluma® Desensitizer*

Shield Force® Plus VS Vanish™ XT*

	 SHIELD FORCE PLUS	3M* VANISH XT	WINNER
Composition	Resin-based	RMGI-based	
	Phosphoric acid monomer	Copolymer of acrylic and itaconic, acids	
	Bis-GMA	Water	
	3G (TEGDMA)	2-Hydroxyethyl Methacrylate (HEMA)	
	HEMA	Calcium Glycerophosphate	
	Alcohol		
	Water		
	Camphorquinone		
FEATURES & BENEFITS			
Expected Long-Term Pain Relief	3 Years****	6 Months	
Solution Color	Green		
Shelf Life	2 Years	2 Years	
Refrigeration Needed	Yes	No	
Delivery System	Bottle 	Paste/Liquid Mix Clicker 	
INDICATIONS			
Under Crowns	Yes		
Bridges	Yes		
Inlays and Onlays	Yes		
Veneers	Yes		
Provisionals	Yes		
Under Direct Restorations	Yes		
Cervical Erosions	Yes	Yes	
Exposed Dentin Surface	Yes	Yes	
Gingival Recession	Yes	Yes	
APPLICATION PROCESS	30 Seconds	≈ 45 Seconds	
Isolate with Dental Dam	Optional	Optional	
Etch Tooth	Not needed	15 seconds for enamel surface	
Apply	10 seconds	5 seconds	
Dry	10 seconds	-	
Rinse	-	-	
Cure	10 seconds	20 seconds	
Wipe	-	5 seconds	

*Not a registered trademark of Tokuyama Dental Corporation.

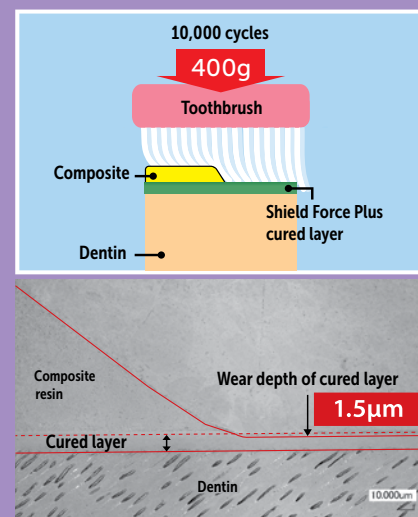
** In-house data, R&D, Tokuyama Dental Corporation.

***Based on Henry Schein pricing.

****Results may vary based on patient diet, proper oral care, and conformance to product directions. Wear data tested in vitro.



Toothbrush Abrasion Test



Shield Force Plus

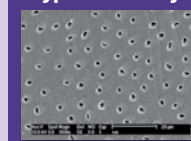
Superior long-term results

Shield Force Plus provides longer-lasting desensitization.

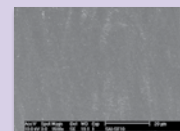
Sealing of dentinal tubules and durability:

- A layer of Shield Force Plus remains on the dentin surface.
- Other products have worn out and exposed dentinal tubules.

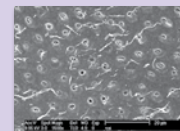
Model for hypersensitivity



Initial placement



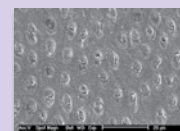
Shield Force® Plus



SuperSeal®

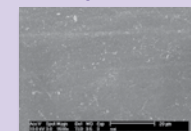


Seal&Protect®

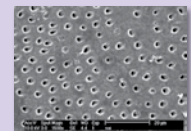


Gluma® Desensitizer

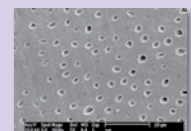
10,000 thermal cycles



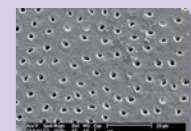
Shield Force® Plus



SuperSeal®*



Seal&Protect®*



Gluma® Desensitizer*

