



CHALLENGES!

We understand your major issues with cementation

Bond strength

Major issues with cements are due weak adhesion occasioning to a failure restorations

Multiple cements, different protocols

Each case and material require specific cement with different protocols, forcing doctor to buy many products, resulting in inventory waste

Clean –up

Struggling with cement excess clean-up is one of the most common concerns doctors report

Cracking and Discoloration

High water absorption resulting in marginal discoloration and risks of cracking

ESTECEM II

A CEMENT SYSTEM FOR ALL YOUR RESTORATIVE NEEDS



ENHANCED STRENGTH

Superior self-etch adhesion to retentive and non-retentive surfaces



UNIVERSAL APPLICATION

All materials, one protocol - no activators or primers required



QUICK CLEAN-UP

3-second tack cure, easy clean-up



HIGH ESTHETICS

Excellent resistance to marginal discoloration due to minimal water absorption

**STRONG.
FAST.
CLEAN!**



STRONG.

Thanks to Tokuyama Universal Bond's 3D-SR monomer that creates a three-dimensional cross-linking adhesion interface for enhanced strength, EsteCem II cement system exhibits outstanding bond strength in self-etch mode to...

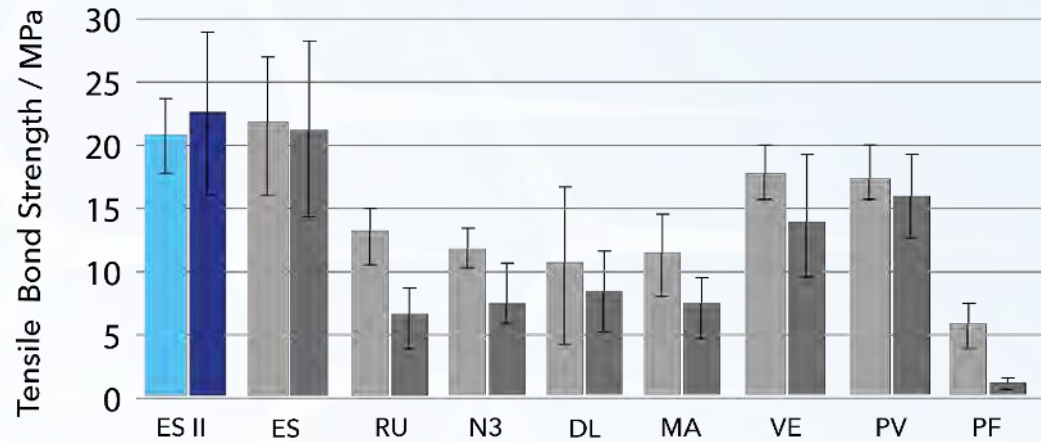
- all restorative materials:
ceramics, metal/glass-fiber posts, resin composite,
porcelain, zirconia
- retentive and non-retentive surfaces



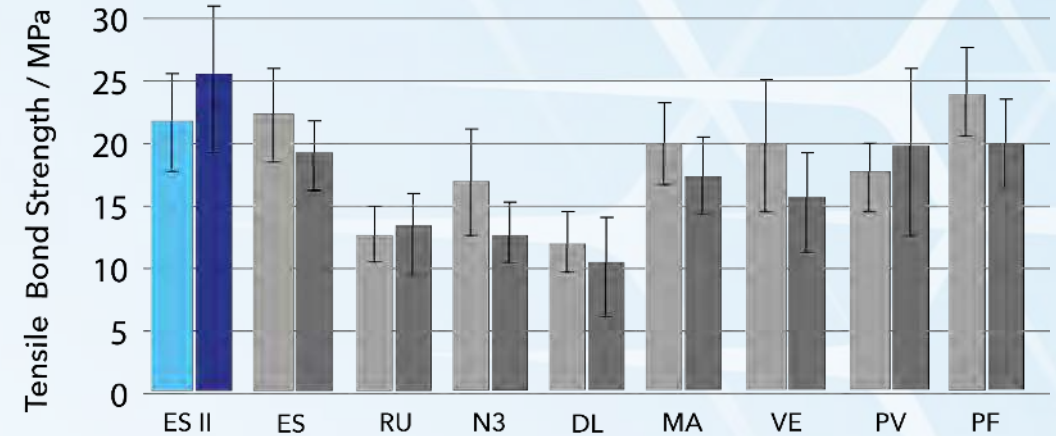
STRONG.

Bond Strength – Cement Comparison

DENTIN



INDIRECT COMPOSITE



After 24hrs



After 3,000 thermo-cycles

ES II: ESTECM II

ES: ESTCEM

RU: Rely X Ultimate

N3: NX3

DL: Duo-Link

MA: Multilink Automix

VE: Variolink Esthetic DC

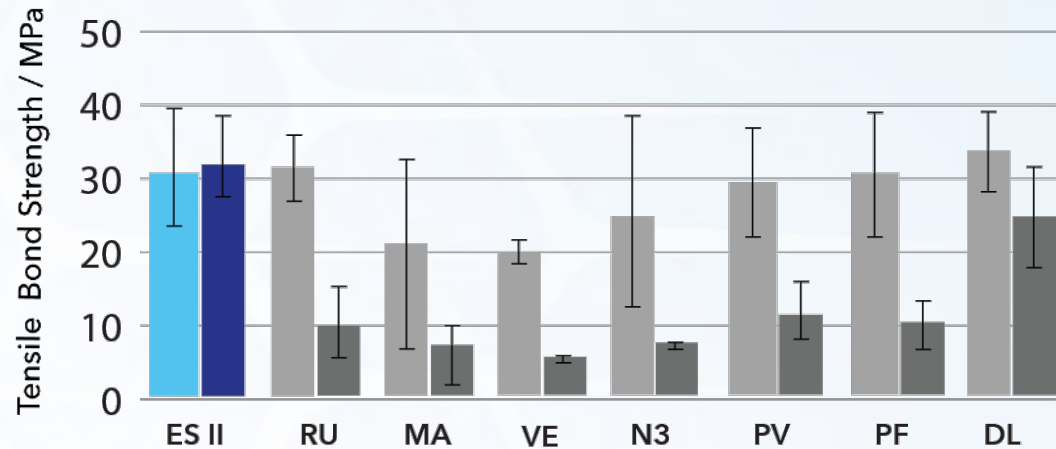
PV: Panavia V5

PF: Panavia F 2.0

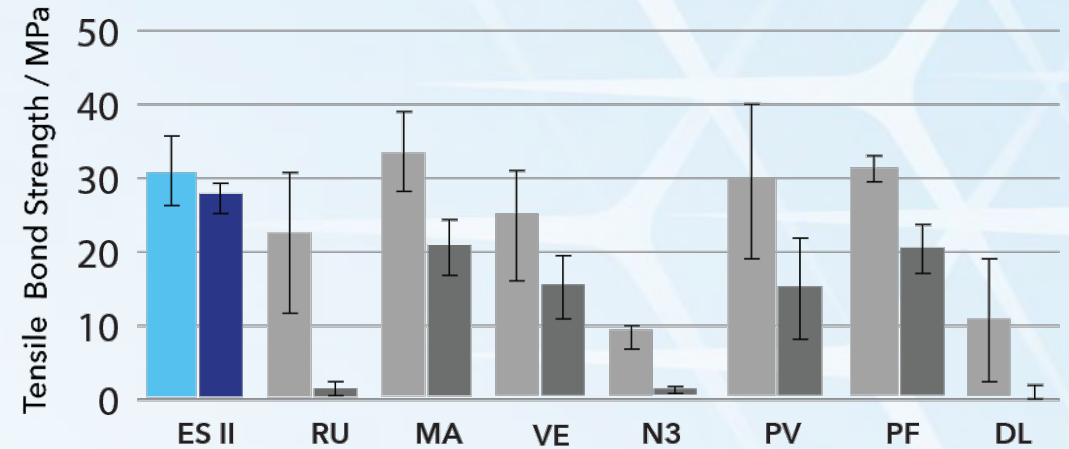
STRONG.

Bond Strength – Cement Comparison

ZIRCONIA



CERAMICS



After 24hrs



After 3,000 thermo-cycles

ES II: ESTECM II

ES: ESTCEM

RU: Rely X Ultimate

N3: NX3

DL: Duo-Link

MA: Multilink Automix

VE: Variolink Esthetic DC

PV: Panavia V5

PF: Panavia F 2.0

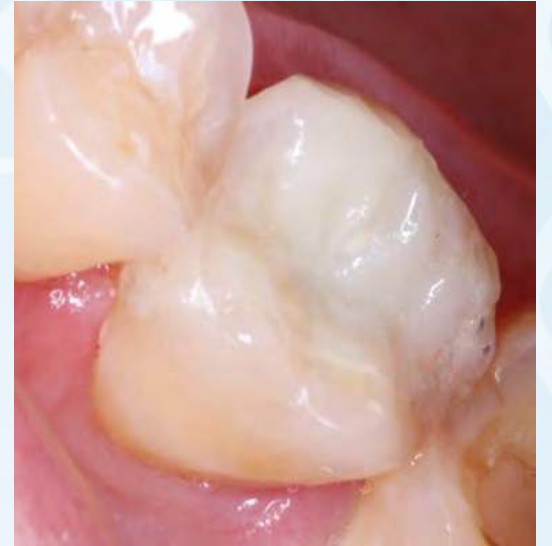
FAST.

With Tokuyama Universal Bond, the bonding procedure takes only 25 seconds, therefore clinicians reduce chair time, inventory and increase productivity

Applications	TOKUYAMA UNIVERSAL BOND	Product Savings
Self-cured without activator		\$50 - \$150
Applied without rubbing		N/A
Releases Fluoride		N/A
Contains Silane		\$50 - \$150
Compatible with Zirconia		\$50 - \$150

CLEAN!

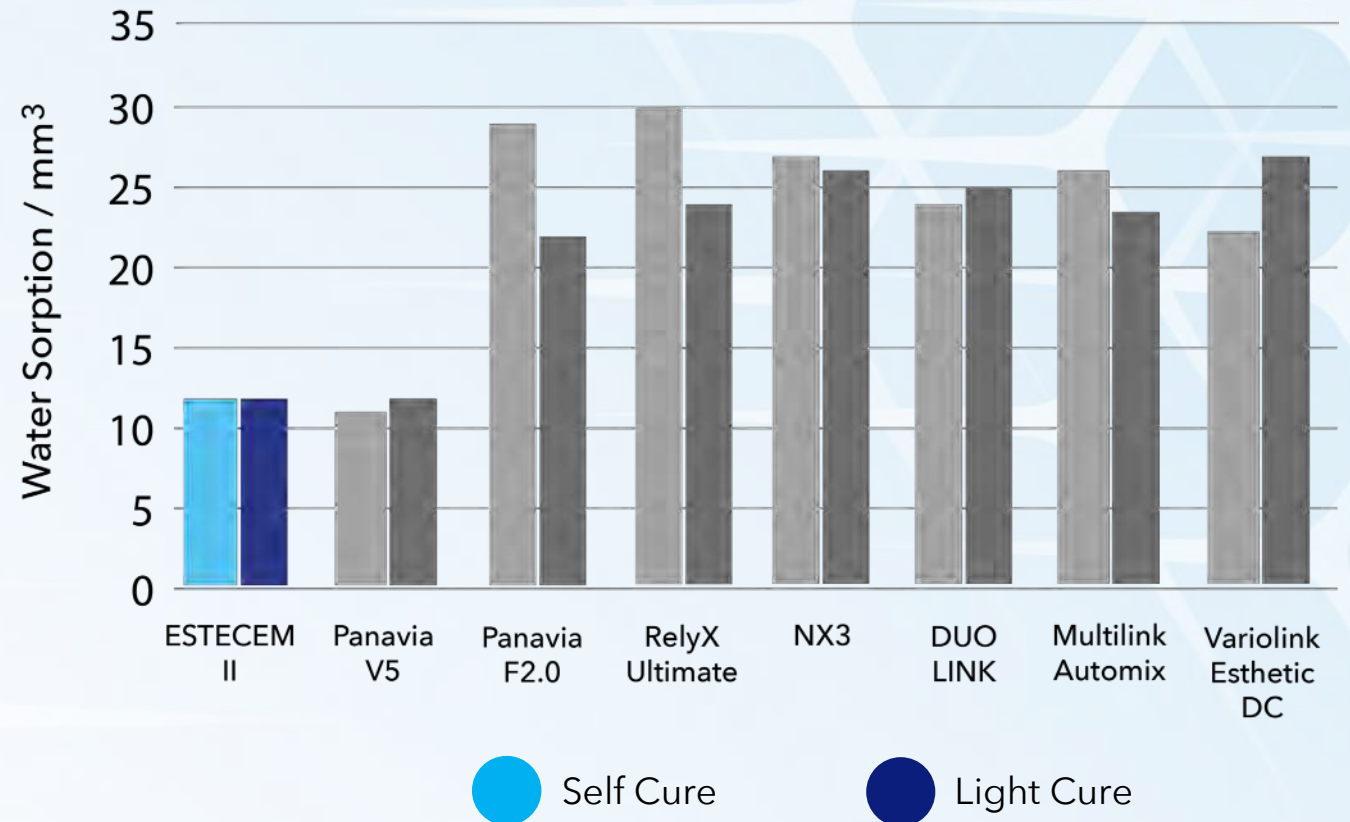
Mess-free clean up: Three seconds of tack cure produce a gel-like viscosity that can be peeled off. To finish the restoration, EsteCem II can be light-cured in 20 seconds (depending on the curing light used), or self-cured in about 8 minutes



HIGH ESTHETICS

Low Water Absorption

Thin 5 microns(μ) Tokuyama Universal Bond layer (hydrophilic) and EsteCem II (highly hydrophobic) offer less water absorption than other DC resin cements as well as 50-200 μ SA cements that have acidic monomers (hydrophilic) and/or additional hydrophilic monomer groups



HIGH ESTHETICS

Low Water Absorption

Low water sorption and hydrophobic cured cement significantly reduces risk of marginal discoloration, providing low color shift even when placed directly into coffee

Coffee Stain Test

	ESTECER II	Panavia V5	Panavia F2.0	RelyX Ultimate	NX3	DUO-LINK	Multilink Automix
Shade	UNIVERSAL	UNIVERSAL	LIGHT	A1	YELLOW	UNIVERSAL	YELLOW
Before test							
After test							
ΔE	4.61	12.50	11.83	8.83	8.90	8.18	10.98

UNIVERSAL APPLICATION

EsteCem II offers simple and consistent procedure for all indications

- ✔ Cementation of crowns, bridges, inlays, and onlays made of glass/oxide ceramics (porcelain, zirconia and alumina), metals/alloys (precious and non-precious) and resin materials including inorganic filler (composite materials)
- ✔ Cementation of veneers
- ✔ Cementation of adhesion bridges
- ✔ Cementation of metal or resin cores, metal or glass-fiber posts
- ✔ Repair of fractured porcelain fused to metal crowns and all ceramic restorations

PROCEDURE GUIDE



Dispense 1 drop of each bottle into the same dimple.

Apply mixed bond. For indirect restorations, apply on both surfaces.

Apply weak air, (5 seconds) then medium air until solvent evaporates. Air dry both surfaces.

Apply auto-mixed cement paste to the restorative and seat with firm pressure.

To remove excess cement, light-cure for 3 seconds, then peel off.

Light-cure lingual and buccal margins for 20 seconds each for final cure.

For direct restorations, only follow first 3 steps

EsteCem II is dual-cure, self-curing in 8 minutes

SHADES AVAILABLE

Universal

Translucent dentin shade. Ideal for anterior esthetic restorations and majority of cases.

Universal shade is included in EsteCem II Kit

Brown

Opaque dentin shade. Suitable for ceramic or composite resin crowns

Clear

Colorless and transparent shade. Suitable for esthetic crowns and veneers requiring more opacity

White-Opaque

A shade with high opacity. Suitable for veneer and cases requiring masking of the underlying dentin or metal/fiber post



THANK YOU

Tokuyama-us.com
+1 (877) 378-3548

