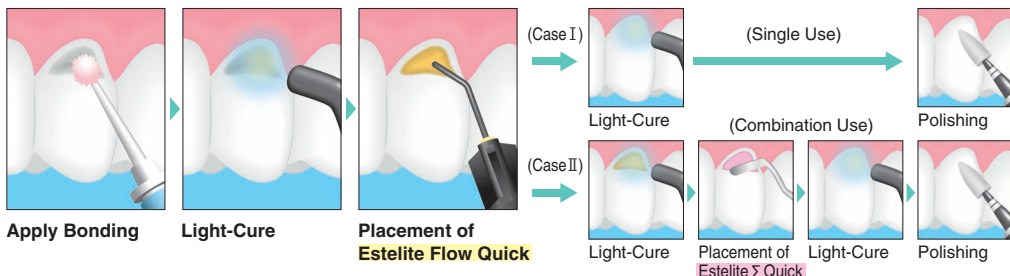


ESTELITE FLOW QUICK

Quick Curing Universal Flowable Composite Resin

- Read instruction before operation.
- Vor der ANwendung die Gebrauchsanweisung lesen.
- Leggere le istruzioni prima dell'uso.
- Veuillez vous référer au mode d'emploi avant utilisation.
- Lea las instrucciones antes del uso.
- Lees de aanwijzingen voor gebruik.



Curing time for **Estelite Flow Quick**

Available Shade Selection

● Halogen 5-10 sec.

● LED* 5-10 sec.

*900mW/cm²

● Plasma Arc 3 sec.



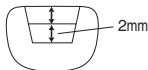
Follow bonding procedure according to the manufacturer's instructions.

We recommend **Estelite Flow Quick** to be used for the following clinical cases according to the Clinical Procedure Guide.

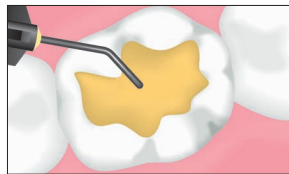
1 Quick incremental placement class I



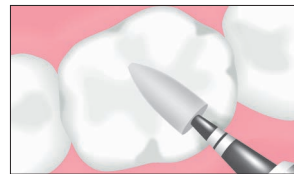
Apply Bonding



2 mm incremental placement
in 2 layers



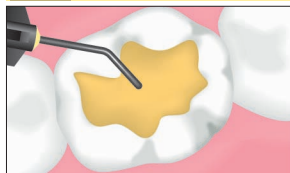
2mm Incremental placement of Estelite Flow Quick with light-cure for 2 layers



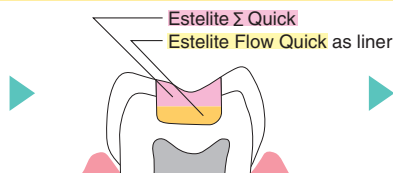
Finishing & Polishing

Estelite Flow Quick ⇒ 10 sec. × 2 layers = 20 sec.
Other Flowable Composites ⇒ 30 sec. × 2 layers = 60 sec.

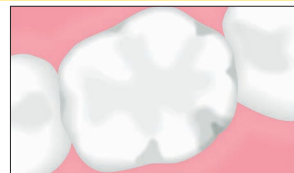
2 Securing Good Adaptation to Cavity Margins class I



Apply Bonding Lining cavity floor with Estelite Flow Quick ⇒ Light-cure

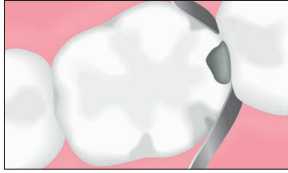


Placement with Estelite Σ Quick for fine Shaping & Sculpting

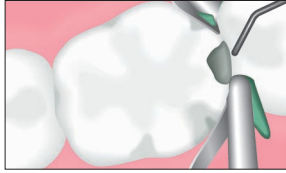


Light-cure
⇒ Polishing

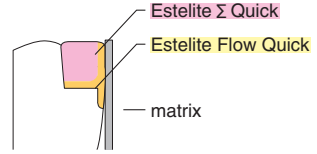
3 Easy matrix application **class II**



Position matrix
⇒ Apply Bonding

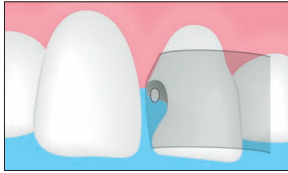


Placement of Estelite Flow Quick
to make a partition along the matrix
⇒ Light-cure

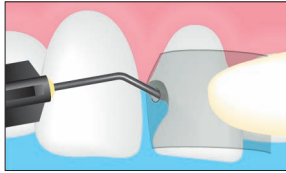


Placement of Estelite Σ Quick
⇒ Light-cure
⇒ Polishing

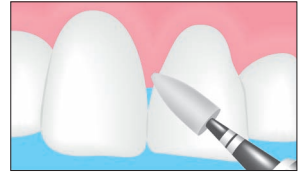
4 Smooth filling **class III**



Apply Bonding
Position matrix and
making a pin hole



Placement of Estelite Flow Quick (OA)
⇒ Light-cure



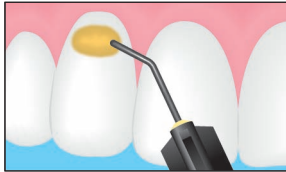
Finishing & Polishing

OA(opalescent) shades are for blockingout the dark shine coming through the oral cavity.
A- Shade is transparent. > OA- Shade is opalescent.

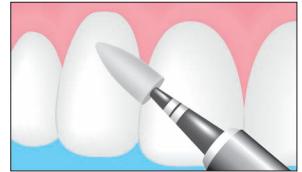
5 Suitable modulus of elasticity for Class V's **class V**



Apply Bonding

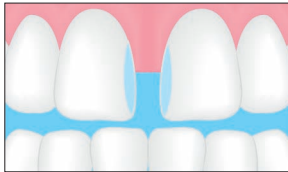


Incremental Placement of
Estelite Flow Quick
⇒ Light-cure

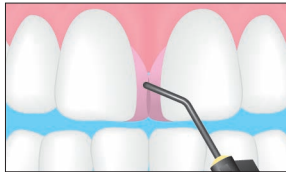


Finishing & Polishing

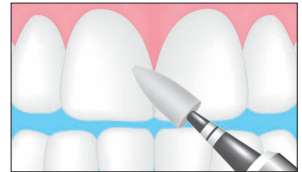
6 Midline Diastema Closure Technique



Preparing enamel surface
⇒ Apply Bonding



Placement of Estelite Σ Quick on incisal third
⇒ Light-cure
⇒ Placement of **Estelite Flow Quick (OA)**
in increments along the gingival $\frac{2}{3}$ rds
⇒ Light-cure



Finishing & Polishing