

SOFRELINER[®] MS/S

Chairside Soft Denture Reline Material

Sofreliner[®] MS/S is a silicone based chairside soft denture reline material. Sofreliner[®] comes in 2 variations: Sofreliner[®] MS (Medium Soft) and Sofreliner[®] S (Soft). Sofreliner[®] MS offers durability and higher tear and stain resistance, and Sofreliner[®] S offers greater comfort with extremely soft texture. Sofreliner[®] cures in 5 minutes, 30 seconds intraorally without odor, taste or chemical irritations.



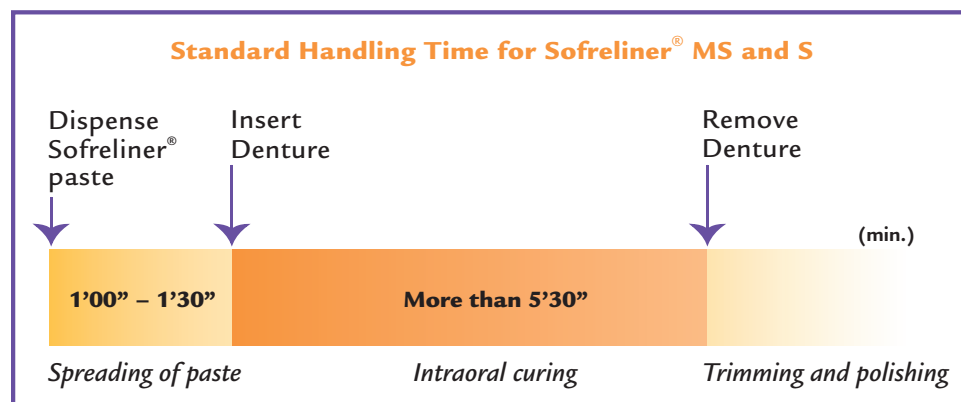
Benefits

- Durability and higher tear resistance (MS)
- Higher stain resistance (MS)
- Extremely soft feel and greater comfort (S)
- No odor, taste or chemical irritation
- Auto-dispensing system
- Available:
 - Special polishing and finishing tools (Steel Bur T101 and Finishing Wheel)
 - Silicone Remover (sold separately) for the removal of old reline materials

Indications

- Pain caused by sharp ridges of alveolar bone and atrophy of mucosa
- Poor retention caused by extreme ridge atrophy
- Major undercuts or maxillary/mandibular tori
- Retention of over dentures before the final attachment is placed

Standard Handling Time for Sofreliner[®] MS and S



SOFRELINER® MS/S

Chairside Soft Denture Reline Material

Product Packages Available

Sofreliner® MS Kit

- Sofreliner® MS Paste/Base paste (27g), catalyst paste (27g)
- Sofreliner® Primer (10ml)
- Brush for primer (x 2)
- Cup for primer (x 2)
- TD II Mixing Tips XS (x 5)
- TD II Mixing Tips S (x5)
- Steel Bur T101
- Finishing Wheel (x 5)
- Spatula

Sofreliner® S Kit

- Sofreliner® S Paste/Base paste (27g), catalyst paste (27g)
- Sofreliner® Primer (10ml)
- Brush for primer (x 2)
- Cup for primer (x 2)
- TD II Mixing Tips XS (x 5)
- TD II Mixing Tips S (x5)
- Steel Bur T101
- Finishing Wheel (x 5)
- Spatula

Refill

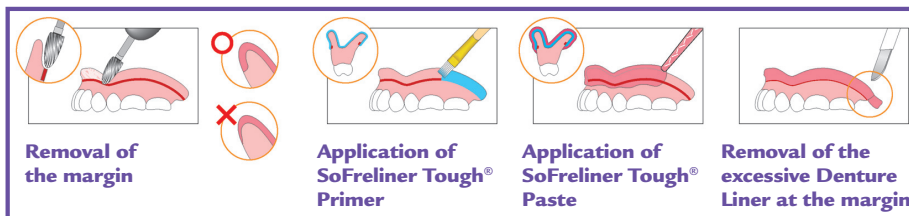
- Sofreliner® MS Paste/Base paste (27g), catalyst paste (27g)
- Sofreliner® S Paste/Base paste (27g), catalyst paste (27g)
- Sofreliner® Primer (10ml)
- TD II Mixing Tips XS (50/box)
- TD II Mixing Tips S (50/box)
- Sofreliner® Finishing System
 - Steel Bur T101
 - Finishing Wheel (x 5)
 - Mandrel T
- Silicone Remover (7ml)
- TD II Dispenser

Silicone Remover

The Silicone Remover (sold separately) is now available, which removes old silicone denture liner from the acrylic denture easily.



SOFRELINER® MS/S PRODUCTS	
ITEM #	ITEM DESCRIPTION
23303	Sofreliner® Kit (S)
23304	Sofreliner® Kit (MS)
23313	Sofreliner® Paste (S)
23314	Sofreliner® Paste (MS)
23316	Sofreliner® Twin Paste (S)
23317	Sofreliner® Twin Paste (MS)
23336	Sofreliner® Primer
23337	Silicone Remover
23380	TD II Mixing Tip XS
23381	TD II Mixing Tip S
23372	TD II Dispenser
23376	Sofreliner® Finishing System



For more information, please call 1.877.ESTELITE or visit www.tokuyama-us.com

